



NEWS from Pforzheim

THE NEW RGB-W DIMMBOXES

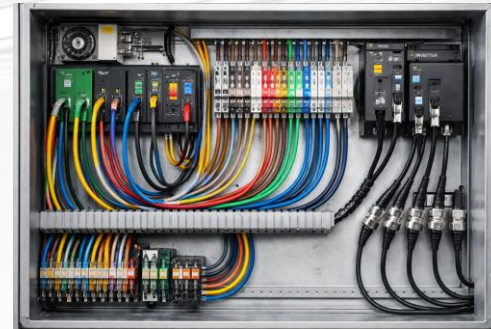
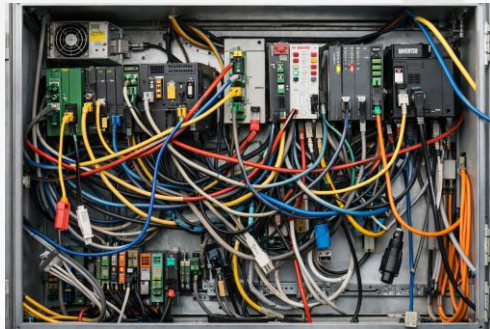
BY HANS RIED | PRODUKT & MARKETING MANAGER

RGB-W IS POWERFUL – BUT OFTEN OVERLY COMPLEX

- ▶ High integration complexity
- ▶ Different control systems
- ▶ Limited flexibility

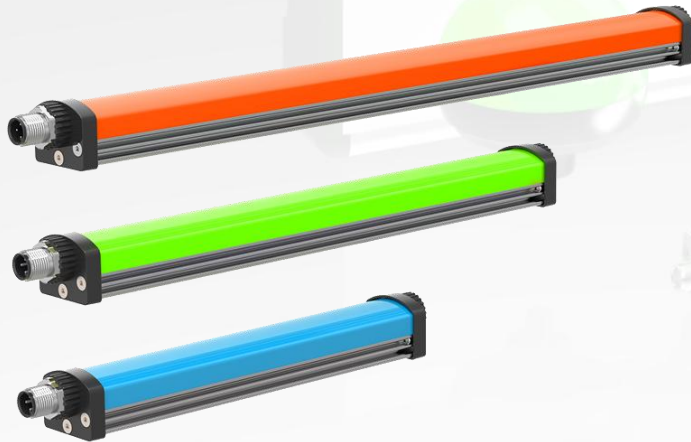
→ **This is exactly where we step in**

- ▶ Simple control
- ▶ Clear structure
- ▶ Fast commissioning



RGW-DIMMER – EASY CONTROL

Designed for machine lighting and industrial applications
as well as the new generation of flexible LED strips



VERSION 1: M12 (210700-08)

210700-08 – Plug & Play mit M12

- ▶ I/O: M12 8-pol / M12 5-pol
- ▶ The usual fast and secure installation
- ▶ High IP-Rating
- ▶ Ideal for machine environments

„Connect, Control, Done“



VERSION 2: TERMINAL CONNECTION (210700-09)

210700-09 – Flexibility in the Control Cabinet

- ▶ Terminal Input (2+12-pos, Wire gauge: 0,2 – 0,5²)
- ▶ Suitable for use in control cabinets
- ▶ Additional Functions
 - ▶ Orange, Amber & Purple
 - ▶ Flash-Function



ONE SOLUTION – TWO CONNECTION CONCEPTS

Similar functionality, different integration approach

- ▶ Identical control logic
- ▶ Different (input) interfaces
- ▶ Tailored to real industrial requirements



2 VERSIONS – FLEXIBLE APPLICATION

210700-08 – Plug & Play

- ▶ Power & connection data: 24V DC @48 Watt
- ▶ Input/Output: M12 8-polig / 5-polig
- ▶ Protection rating: IP54 @ -20°C – +50°C
- ▶ PWM-Frequency: ~2,4 kHz
- ▶ Colors: Red, Green, Blue, White
- ▶ Preset functions: -
- ▶ Application: RGB-W lights and flexible LED strips (overall)
- ▶ Control input: SPS od. Analog

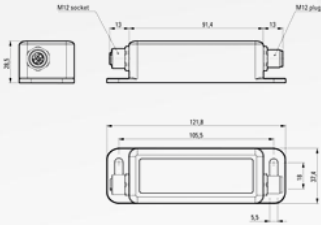
210700-09 – Flexible Integration

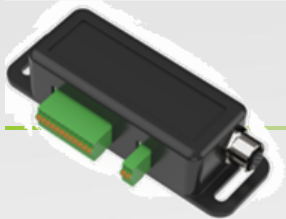
- ▶ Power & connection data: 24V DC @96 Watt
- ▶ Terminal strip: 2+12-polig (Versorgung + Steuerung)
- ▶ Output: M12 5-polig (RGB-W)
- ▶ Protection rating: IP54 @ -20°C – +50°C
- ▶ PWM-Frequency: ~2,4 kHz
- ▶ Colors: Red, Green, Blue, White
- ▶ Additional preset colors: Orange, Amber & Purple
- ▶ Preset functions: ⚡ Flash
- ▶ Einsatz: RGB-W lights and flexible LED strips (overall)
- ▶ Control input: SPS od. Analog



Artikel-Nr.	210700-08
EAN:	4260556627571
Modell:	24V DC RGB-W DIMMBOX, M12
Bestell-Nr.:	210700-08
Modell:	24V DC RGB-W DIMMBOX, M12
Bauform:	Aufbaugerät mit Befestigung über Langloch
Leistung:	48 W
Spannung Eingang/Ausgang:	24V DC
Strombelastung max.:	2 A
Belegung PIN1 Input/Output:	Pin1 VCC / Pin1 Grün
Belegung PIN2 Input/Output:	Pin2 GND / Pin2 Blau
Belegung PIN3 Input/Output:	Pin3 Helligkeit / Pin3 GND
Belegung PIN4 Input/Output:	Pin4 Helligkeit / Pin4 Rot
Belegung PIN5 Input/Output:	Pin5 Rot / Pin5 Weiß
Belegung PIN6 Input:	Pin6 Grün
Belegung PIN7 Input:	Pin7 Blau
Belegung PIN8 Input:	Pin8 Weiß

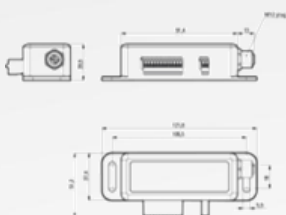
PIN 4	PIN 3	Helligkeit Brightness
0	0	100 %
0	1	75 %
1	0	50 %
1	1	25 %





Artikel-Nr.	210700-09
EAN:	4260556628806
Modell:	24V DC RGB-W DIMMBOX, Klemme
Bestell-Nr.:	210700-09
Modell:	24V DC RGB-W DIMMBOX, Klemme
Bauform:	Aufbaugerät mit Befestigung über Langloch
Leistung:	96 W
Spannung Eingang/Ausgang:	24V DC
Strombelastung max.:	4 A
Versorgung PIN1 Input:	Pin1 VCC
Versorgung PIN2 Input:	Pin2 GND
Steuerung PIN1 Input/Output:	Pin1 GND / Pin1 Grün
Steuerung PIN2 Input/Output:	Pin2 Helligkeit / Pin2 Blau
Steuerung PIN3 Input/Output:	Pin3 Helligkeit / Pin3 GND
Steuerung PIN4 Input/Output:	Pin4 Helligkeit / Pin4 Rot
Steuerung PIN5 Input/Output:	Pin5 Flash / Pin5 Weiß
Steuerung PIN6 Input:	Pin6 Rot
Steuerung PIN7 Input:	Pin7 Grün
Steuerung PIN8 Input:	Pin8 Blau
Steuerung PIN9 Input:	Pin9 Weiß
Steuerung PIN10 Input:	Pin10 Orange
Steuerung PIN11 Input:	Pin 11 Amber
Steuerung PIN12 Input:	Pin 12 Purple

PIN 4	PIN 3	PIN 2	Helligkeit Brightness
0	0	0	100 %
0	0	1	75 %
0	1	0	60 %
0	1	1	50 %
1	0	0	33 %
1	0	1	25 %
1	1	0	15 %
1	1	1	10 %



WHICH VERSION WHEN? – ADDED VALUE

M12 - 210700-08

- ▶ Machine application
- ▶ Fast integration
- ▶ Minimal effort

Terminal block connection - 210700-09

- ▶ Control cabinet / distribution box
- ▶ Flexible wiring
- ▶ Extended standard functions



Machines



Systems



Intralogistics



Please share your questions via the MS Forms
link in the E-Mail

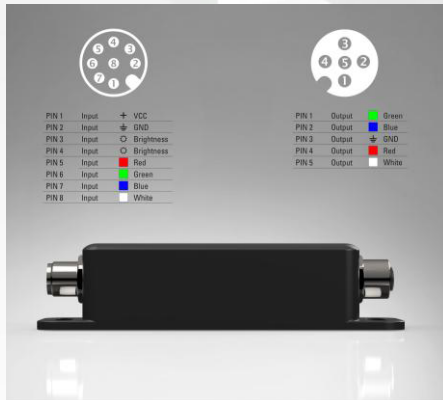


Hans Ried

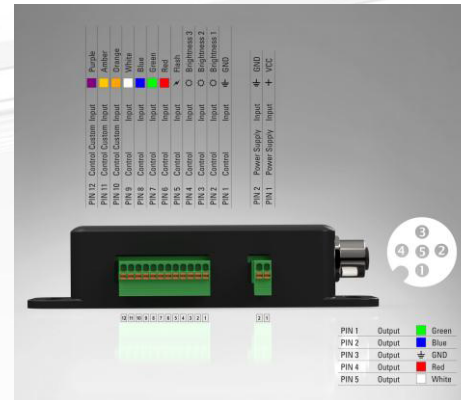
Produkt- & Marketing Manager
j.ried@led2work.com

LED2WORK
INTELLIGENCE IN LIGHT

Version 1: M12



Version 2: Terminal block connection



BIBUS®
SUPPORTING YOUR SUCCESS

BIBUS SK, s.r.o
Trnavská 31, SK-94 901 Nitra

Tel.: 037/ 7777 911 Email: sale@bibus.sk
Fax.: 037/ 7777 999 http://www.bibus.sk