

General Purpose Valves
Catalog No. CB-03-1SA

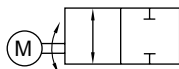
Oil-free motor driven 2-port ball valve

MXB1-FP2/MXB1D-FP2 Series

● Port size: Rc3/8 to Rc2



JIS symbol



Common specifications

Descriptions	MXB1 (standard)/MXB1D (with relay)
Working fluid	Water/air/oil (500 mm ² /s or less)
Working pressure MPa	0 to 1.0 (refer to working pressure in individual specifications.)
Proof pressure (water pressure) MPa	2.0
Fluid temperature °C	0 to 80 (no freezing)
Ambient temperature °C	-10 to 50
Ambient humidity %	95 or less
Mounting orientation	From vertical direction with the actuator on the top to horizontal direction. (Refer to General Purpose Valves (catalog No. CB-03-1SA).)
Pressurization direction	Arbitrary
Degree of protection	IPX3 "Rainproof"

Electrical specifications

Descriptions		MXB1-10	MXB1-15	MXB1-20	MXB1-25	MXB1-32	MXB1-40	MXB1-50		
Rated voltage		*1 100 VAC (50/60 Hz), 200 VAC (50/60 Hz), 12 VDC, 24 VDC								
Apparent power	VA	Operating	100 VAC			4.9/5.9 (50/60 Hz)			13/15 (50/60 Hz)	
		200 VAC	5.4/6.2 (50/60 Hz)			13/15 (50/60 Hz)				
	When starting	100 VAC	4.9/5.9 (50/60 Hz)			13/15 (50/60 Hz)				
		200 VAC	5.4/6.2 (50/60 Hz)			13/15 (50/60 Hz)				
Average current value		A	12 VDC		1.1		1.5			
			*2 24 VDC		0.7		1.0			
Starting current		A	12 VDC		1.8 or less		3 or less			
			*2 24 VDC		1.2 or less		2 or less			
Power consumption		W	AC		7		15			
			12 VDC		13		18			
			24 VDC		17		24			
Descriptions		MXB1D-10	MXB1D-15	MXB1D-20	MXB1D-25	MXB1D-32	MXB1D-40	MXB1D-50		
Rated voltage		*1 100 VAC (50/60 Hz), 200 VAC (50/60 Hz)								
Apparent power	VA	Operating	100 VAC			6.0/6.8 (50/60 Hz)			14/16 (50/60 Hz)	
		200 VAC	6.6/7.2 (50/60 Hz)			14/16 (50/60 Hz)				
	When starting	100 VAC	6.0/6.8 (50/60 Hz)			14/16 (50/60 Hz)				
		200 VAC	6.6/7.2 (50/60 Hz)			14/16 (50/60 Hz)				
Power consumption		W	8			16				

Individual specifications

Descriptions	MXB1-10	MXB1-15	MXB1-20	MXB1-25	MXB1-32	MXB1-40	MXB1-50
Port size	Rc3/8	Rc1/2	Rc3/4	Rc1	Rc1 1/4	Rc1 1/2	Rc2
Orifice size mm	10	10	15	20	25	32	40
Cv	10	6	16	29	50	98	125
Working pressure MPa	0 to 1.0						0 to 0.5
Response time sec	AC	10/8 (50/60 Hz)			13/11 (50/60 Hz)		
	DC	8			10.5		
Frequency	AC	2 time/min. or less			1 time/min. or less		
	*3 DC	1 time/min. or less			1 time/2 min. or less		
Weight kg	MXB1	1.2	1.2	1.4	1.5	2.6	3.1
	MXB1D	1.2	1.3	1.4	1.6	2.7	3.1

*1: Use the product within ±10% of the rated voltage.

*2: Current values at the rated voltage

*3: Be sure to observe the specified frequency of use.

*4: Contact CKD about specifications other than above.

MXB1-FP2/MXB1D-FP2 Series

How to order

How to order

MXB1 - 32 - N T M - FP2 - 1

MXB1D

Model No.

A Port size

B Body/seal material

C Other options

D Manual override

*1

E Voltage

		Model No.			
Code	Content	MXB1	MXB1D		
A Port size					
10	Rc3/8	●	●		
15	Rc1/2	●	●		
20	Rc3/4	●	●		
25	Rc1	●	●		
32	Rc1 ¹ / ₄	●	●		
40	Rc1 ¹ / ₂	●	●		
50	Rc2	●	●		
B Body/seal material					
N	Stainless steel body/PTFE seating/oil-prohibited specifications	●	●		
C Other options					
	Content	Applications	Remarks		
Blank	5-conductor cable 0.5 mm ² (with output lead wire)	—	—	●	●
T	3-conductor cable 0.75 mm ² (without signal output)	When output lead wire is not required	3-conductor cabtyre cable used	●	●
D Manual override					
Blank	None			●	●
M	Manual override			●	●
E Voltage					
1	100 VAC (50/60 Hz)			●	●
2	200 VAC (50/60 Hz)			●	●
3	24 VDC			●	
4	12 VDC			●	

*1: When the manual override (D Item M) is selected, available port sizes are 32, 40 and 50. Manual override is provided as standard with other port size.

[Example of model No.]

MXB1-32-NTM-FP2-1

Model No.: MXB1 (standard)

- A Port size : Rc1 1/4
- B Body material : Stainless steel body/PTFE seating/oil-prohibited specifications
- C Other options : 3-conductor cable (without output lead wire)
- D Manual override : Selected
- E Voltage : 100 VAC (50/60 Hz)

Electric actuator	Pneumatic cylinders	Pneumatic valves	FRU/Auxiliary components	Electronic components	Vacuum components	Main line components	Fluid control valves	Main line components	Antibacterial/Bacteria-removing filter	Vacuum components	Fluid control valves

General Purpose Valves
Catalog No. CB-03-1SA

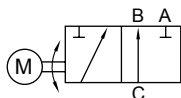
Oil-free motorized 3-port ball valve

MXG1-FP2/MXG1D-FP2 Series

● Port size: Rc1/2 to Rc2



JIS symbol



Common specifications

Descriptions	MXG1 (standard)/MXG1D (with relay)
Working fluid	Water/air/oil (500 mm ² /s or less)
Working pressure MPa	0 to 1.0 (refer to working pressure in individual specifications.)
Proof pressure (water pressure) MPa	2.0
Fluid temperature °C	0 to 80 (no freezing)
Ambient temperature °C	-10 to 50
Ambient humidity %	95 or less
Mounting orientation	From vertical direction with the actuator on the top to horizontal direction.
Pressurization direction	Port C pressurization only
Degree of protection	IPX3 "Rainproof"

Electrical specifications

Descriptions		MXG1-15	MXG1-20	MXG1-25	MXG1-32	MXG1-40	MXG1-50
Rated voltage		*1100 VAC (50/60 Hz), 200 VAC (50/60 Hz), 12 VDC, 24 VDC					
Apparent power	VA	Operating	100 VAC		4.9/5.9 (50/60 Hz)		13/15 (50/60 Hz)
		200 VAC	5.4/6.2 (50/60 Hz)		13/15 (50/60 Hz)		
	When starting	100 VAC		4.9/5.9 (50/60 Hz)		13/15 (50/60 Hz)	
		200 VAC		5.4/6.2 (50/60 Hz)		13/15 (50/60 Hz)	
Average current value		A	12 VDC		1.1		1.5
*2		24 VDC		0.7		1.0	
Starting current		A	12 VDC		1.8 or less		3 or less
*2		24 VDC		1.2 or less		2 or less	
Power consumption	W	AC		7		15	
		12 VDC		13		18	
		24 VDC		17		24	
Descriptions		MXG1D-15	MXG1D-20	MXG1D-25	MXG1D-32	MXG1D-40	MXG1D-50
Rated voltage		*1100 VAC (50/60 Hz), 200 VAC (50/60 Hz)					
Apparent power	VA	Operating	100 VAC		6.0/6.8 (50/60 Hz)		14/16 (50/60 Hz)
		200 VAC	6.6/7.2 (50/60 Hz)		14/16 (50/60 Hz)		
	When starting	100 VAC		6.0/6.8 (50/60 Hz)		14/16 (50/60 Hz)	
		200 VAC		6.6/7.2 (50/60 Hz)		14/16 (50/60 Hz)	
Power consumption		W		8		16	

Individual specifications

Descriptions		MXG1-15	MXG1-20	MXG1-25	MXG1-32	MXG1-40	MXG1-50
		MXG1D-15	MXG1D-20	MXG1D-25	MXG1D-32	MXG1D-40	MXG1D-50
Port size		Rc1/2	Rc3/4	Rc1	Rc1 ¹ / ₄	Rc1 ¹ / ₂	Rc2
Orifice size	mm	10	14	19	23	30	38
Cv		3	6	11	16	28	47
Working pressure		MPa 0 to 1.0					0 to 0.5
Response time	AC	20/16 (50/60 Hz)			26/22 (50/60 Hz)		
	sec DC	16			21		
Frequency	AC	1 time/min. or less			1 time/2 min. or less		
	*3 DC	1 time/2 min. or less			1 time/5 min. or less		
Weight	kg MXG1	1.3	1.4	1.7	2.7	3.2	4.1
	MXG1D	1.3	1.5	1.7	2.7	3.3	4.2

*1: Use the product within ±10% of the rated voltage.

*2: Current values at the rated voltage

*3: Be sure to observe the specified frequency of use.

*4: Contact CKD about specifications other than above.

MXG1-FP2/MXG1D-FP2 Series

How to order

How to order

MXG1 - **20** - **N** **K** - **FP2** - **2**

MXG1D

Model No.

A Port size

B Body/seal material

C Other options

D Voltage

[Example of model No.]

MXG1-20-NK-FP2-2

Model: MXG1

- A** Port size : Rc3/4
- B** Body/seal material : Stainless steel body/PTFE seating/oil-prohibited specifications
- C** Other options : Multi-fluid (90° rotation switching, response time 1/2)
- D** Voltage : 200 VAC (50/60 Hz)

		Model No.			
Code	Content	MXG1	MXG1D		
A Port size					
15	Rc1/2	●	●		
20	Rc3/4	●	●		
25	Rc1	●	●		
32	Rc1 ¹ / ₄	●	●		
40	Rc1 ¹ / ₂	●	●		
50	Rc2	●	●		
B Body/seal material					
N	Stainless steel body/PTFE seating/oil-prohibited specifications	●	●		
C Other options					
	Content	Applications	Remarks		
Blank	5-conductor cable 0.5 mm ² (with output lead wire)	—	—	●	●
T	3-conductor cable 0.75 mm ² (without signal output)	When output lead wire is not required	3-conductor cabtyre cable used	●	●
K	Multi-fluid (90° rotation switching Response time 1/2)	To remove load to pump	Fluids may mix somewhat during switching	●	●
TK	3-conductor cable 0.75 mm ² Multi-fluid	—	—	●	●
D Voltage					
1	100 VAC (50/60 Hz)			●	●
2	200 VAC (50/60 Hz)			●	●
3	24 VDC			●	
4	12 VDC			●	

Electric actuator	Pneumatic cylinders	Pneumatic valves	FRU/Auxiliary components	Vacuum components	Main line components	Fluid control valves	Main line components	Antibacterial/Bacteria-removing filter	Vacuum components	Fluid control valves
			FP1							FP2