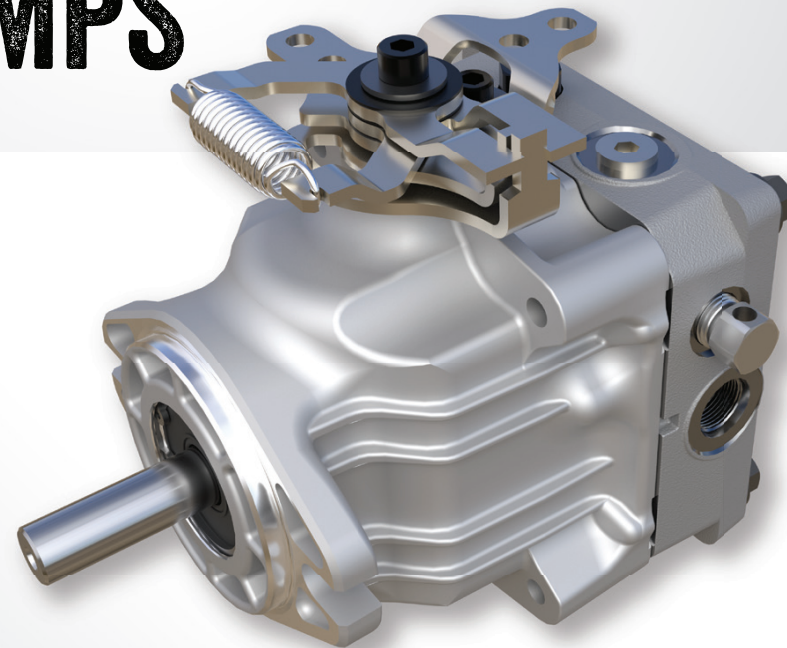
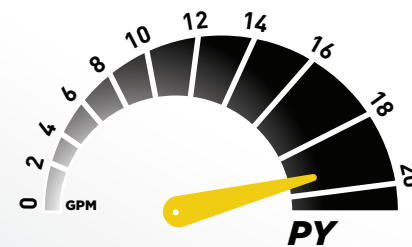
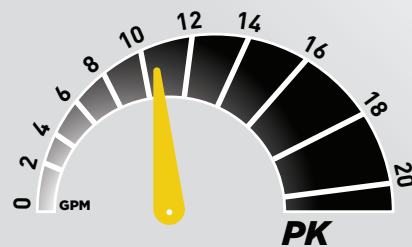
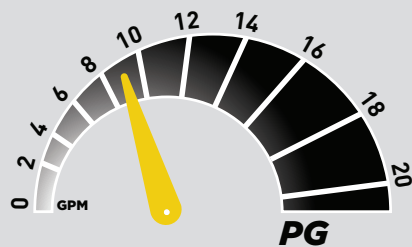
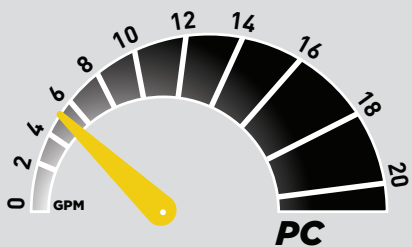


P SERIES[®] PISTON PUMPS

PUMP OPTIONS

- Return-to-neutral device for smooth de-stroke capability
- Most industry-standard shaft options for greater adaptability
- Tandem pumps for multi-circuits
- Auxiliary pumps to provide power to additional functions
- Cooling fan when additional cooling is desired

MAX GALLONS PER MINUTE



P SERIES[®] PISTON PUMPS

PUMP SPECIFICATIONS

	PC	PG	PK	PR	PY
DISPLACEMENT	0.37 in ³ /rev [6.1 cc/rev]	0.62in ³ /rev [10.2 cc/rev]	0.73 in ³ /rev [12 cc/rev]	0.97 in ³ /rev [16 cc/rev]	1.33 in ³ /rev [21.8 cc/rev]
SYSTEM OPERATING PRESSURE					
CONTINUOUS	750 psi [51 bar]	1500 psi [103 bar]	1500 psi [103 bar]	1500 psi [103 bar]	1500 psi [103 bar]
INTERMITTENT	1750 psi [120 bar]	2100 psi [145 bar]	2100 psi [145 bar]	2500 psi [172 bar]	2750 psi [190 bar]
PEAK	2500 psi [172 bar]	3500 psi [240 bar]	3500 psi [240 bar]	3750 psi [260 bar]	3750 psi [260 bar]
PUMP PERFORMANCE					
@ 2400 RPM/1000 PSI	3.6 gpm [13.6 l/min]	6.1 gpm [23.1 l/min]	7.1 gpm [26.8 l/min]	9.6 gpm [36.3 l/min]	13.1 gpm [49.6 l/min]
@ 3000 RPM/1000 PSI	4.5 gpm [17.0 l/min]	7.6 gpm [28.8 l/min]	8.9 gpm [33.6 l/min]	12 gpm [45.4 l/min]	16.4 gpm [62.1 l/min]
@ 3600 RPM/1000 PSI	5.4 gpm [20.4 l/min]	9.2 gpm [34.8 l/min]	10.8 gpm [40.8 l/min]	14.4 gpm [54.5 l/min]	19.6 gpm [74.2 l/min]
CHARGE PUMP DISPLACEMENT(S)	0.13 in ³ /rev [2.1 cc/rev]	0.11/0.13 in ³ /rev [1.9/2.1 cc/rev]	0.19 in ³ /rev [3.2 cc/rev]	0.13/0.19 in ³ /rev [2.1/3.2 cc/rev]	0.25 in ³ /rev [4.1 cc/rev]

PUMP OIL TEMPERATURE
MAX. INTERMITTENT (HOTTEST PT)
NORMAL OPERATING RANGE

230 °F [110 °C]
-10 to 200 °F [-23 to 93 °C]

Specifications subject to change without notice